

2024 GREAT  
COLLEGES  
TO WORK FOR®

# 2024 REPORTS GUIDE

**ModernThink**

2 MILL ROAD, SUITE 102 • WILMINGTON, DE 19806

[GREATCOLLEGES@MODERNTHINK.COM](mailto:GREATCOLLEGES@MODERNTHINK.COM)

[GREATCOLLEGESPROGRAM.COM](http://GREATCOLLEGESPROGRAM.COM)

888.684.4658

# Unleash the Power of Data.

The ModernThink Higher Education Insight Survey® is specifically designed to measure the organizational dynamics and competencies unique to institutions of higher education.

The survey instrument measures the extent to which employees are involved and engaged in the organization and ultimately, the health of the culture and quality of the workplace experience. The free Topline Reports you receive provide a high-level, visual summary of your survey data.

Some participants ultimately want to do a deeper dive into the data. Sometimes, that's to inform a cultural SWOT analysis; other times, it may be to support a GAP analysis against ModernThink's unique Higher Education benchmarks. And frequently, it's simply to better understand the day-to-day experience of your faculty and staff across demographic groups.

Over the years, we've seen participants use their Great Colleges survey data to inform strategic planning processes, provide supporting evidence in accreditation reviews and inform new leaders about the status and health of the institution's culture. Whatever the case, the reports detailed in this brochure will help you be data-informed to help you celebrate the strengths of your culture, address the soft spots and take informed action.

The image displays three screenshots of ModernThink survey spreadsheets. The top screenshot is the 'General Demographics Spreadsheet' for XYZ University, showing overall scores and benchmarks for various categories like Faculty, Staff, and Administrators. The middle screenshot is the 'College/School and Division/Department Spreadsheet' for XYZ University, providing a more granular view of scores by department. The bottom screenshot is the 'Faculty Experience Spreadsheet' for XYZ University, detailing scores for specific faculty-related metrics. Each spreadsheet includes columns for 'Overall', 'Benchmarks', and 'Pre-loaded Job Category'.

The G

ModernThink LLC

# REPORT SUITES



## New Participant Suite - includes four reports

Available to first-time participants and institutions who have never ordered reports. This suite combines both the qualitative and quantitative aspects of the survey, as well as valuable benchmarking data, to give institutions new to the program useful baseline and metric data to leverage right from the start!

**Employee Comments Report** - As part of the survey, employees are asked two open-ended questions. This report provides their responses exactly as written sorted by job category.

**Job Category Benchmark Spreadsheet** - Provides overall positive/negative response rates for each survey statement and overall 2024 benchmark columns for Honor Roll and Carnegie Classification. From there, you can compare the percent positive and negative data for each job category against the two columns of benchmark data. For an additional discounted fee of \$828, we can create a custom aggregate peer benchmark for you based on institutions you select.

**Response Distribution Reports** - These two graphical reports show the percentages of all response options (Strongly Agree, Agree, Sometimes Agree/Sometimes Disagree, Disagree, Strongly Disagree) to the survey statements by job category (one for staff/administration and one for faculty/adjunct).

**Cost: \$1,650**

## Survey Data Suite - includes three reports

This Excel report suite summarizes your overall positive and negative responses for all survey statements and provides results across each demographic asked in the survey. Your spreadsheets include two columns of valuable benchmarking data from the 2024 program: Honor Roll and Carnegie Classification.

**General Demographics Spreadsheet** - Contains data by: Gender Identity, Age, Race/Ethnicity, Years at Institution, Employment Status and Remote Work.

**College/School and Division/Department Spreadsheet** - Contains data by: College, School, Department

**Faculty Experience Spreadsheet** - Contains data specific to faculty and adjuncts only: College/School, Academic Role, Tenure Status (four-year institutions only), Gender Identity, and Race/Ethnicity.

**Cost: \$1,745**

Overall	Benchmarks	Pre-ranked Job Category	Gender Identity	Age
Collaboration	85	85	85	85
Communication	85	85	85	85
Confidence in Senior Leadership	85	85	85	85
Diversity, Belonging & Inclusion	85	85	85	85

## Survey Results Suite - includes eight reports

The comprehensive report suite provides results for every question asked in our survey including the open-ended responses. Two levels of benchmarking are Honor Roll and Carnegie Classification. This is the most popular suite.

**Survey Data Suite** - See prior description

**Employee Comments Report** - As part of the survey, employees are asked two open-ended questions. This report provides their responses exactly as written sorted by job category.

**Response Distribution Report** - These two graphical reports show the percentages of all response options (Strongly Agree, Agree, Sometimes Agree/Sometimes Disagree, Disagree, Strongly Disagree) to the survey statements by job category (one for staff/administration and one for faculty/adjunct).

**Benefits Satisfaction Report** - This report documents satisfaction with benefits including medical and dental insurance, work/life balance programs, professional development opportunities, and recognition programs among others. Responses are broken down by job category.

**Profile of Survey Respondents** - Use this response rate report as a quick reference guide to the percentage of respondents in each demographic such as Gender Identity, Race/Ethnicity and more.

**Cost: \$3,510**

## Benchmark Data Suite - includes four reports

Designed for institutions that want to dive deep into comparative data. Each report in this suite offers external benchmark comparisons to your survey results and is alternatively available for individual purchase outside of the suite.

**Overall Benchmark ScoreCard** - See how your workforce's results compare to those of other institutions. This report allows you to compare a series of higher education benchmarks. The benchmarks are averages of the positive responses among peer institutions within these designated categories: *2024 Honor Roll, Carnegie Classification, Enrollment Size, Region and Public/Private institutions.*

**Benefits Satisfaction Benchmark Report** - Compare your institutions overall benefits satisfaction against the programs core 2024 benchmarks: *Honor Roll, Carnegie Classification, Enrollment Size, Region and Public/Private institutions.*

**Job Category Benchmark Spreadsheet** - Provides overall positive/negative response rates for each survey statement and overall benchmark columns for Honor Roll and Carnegie Classification. From there, you can compare the percent positive and negative data for each job category against the two columns of benchmark data.

**Recognition Category ScoreCard** - This report shows how your results compared to 2024 recognized institutions in your two-year / four-year and size categories in each of the 10 recognition categories.

**Cost: \$3,900**

## Job Category Report Suite - includes five reports

The reports in this suite are ideal for institutions that are most interested in internal and external comparisons for faculty and staff. This suite allows you to examine your employees' experience in the workplace through the lens of inclusion by looking at results by race/ethnicity, gender identity, and other protected classes.

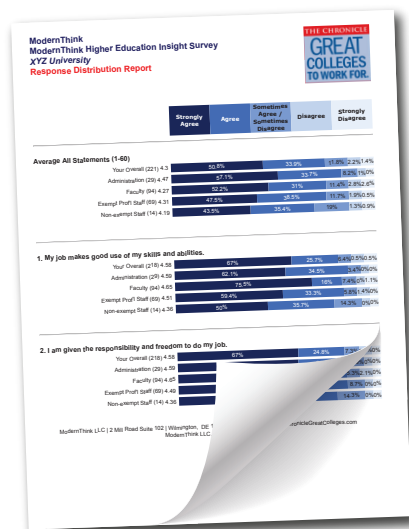
**Employee Comments Report** - See prior description

**General Demographics Spreadsheet** - See prior description

**Cost: \$3,200**

**Response Distribution Report** - See prior description

**Job Category Benchmark Spreadsheet** - See prior description





# ONLINE REPORT GATEWAY



**For institutions that have made an ongoing commitment to participating on a regular cycle in the Great Colleges program, our online Report Gateway is an option you should consider as an alternative to our static reports. The web-based Gateway provides users the flexibility to run their own reports for dynamic visual renderings of survey data in multiple formats. The Gateway includes all of your current and previous survey data with ModernThink since 2010 which allows for year over year comparisons.**

This reporting option is particularly appealing to audiences who require more in-depth analysis than the static reports provide. The Gateway is a proven tool that has been used by single institutions as well as large systems over the last eight years. Access includes 10 users.

## Your Gateway would include the following:

- All your historical data (after 2010) is included for previous program participants and/or ModernThink custom clients as well as standard Great Colleges benchmarking (Honor Roll and Carnegie).
- Results for all of the questions and demographics asked in the survey including narrative responses, statement results, benefit comparisons and data filtering by all demographics (i.e. Gender Identity, Age, Race/Ethnicity, etc.).
- Reports on the Gateway include a Standard Deviation report which shows n-values, mean scores, and standard deviation across your survey statements, benefits, themes and demographics. See website for more details.
- All data on the Gateway can be exported to .csv files to be uploaded to other analysis platforms like SPSS, Tableau or Qualtrics.

A demo of this option can be provided. Please contact Suzi Schmittlein at [sschmittlein@modernthink.com](mailto:sschmittlein@modernthink.com) for more information.

**First Year Cost: \$4,500**  
**Renewal Cost: \$2,900 (discounts do not apply)**

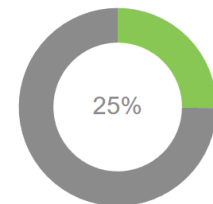
### Overall Scores

Percent Positive      Percent Negative

**73**

**13**

### Response Rate



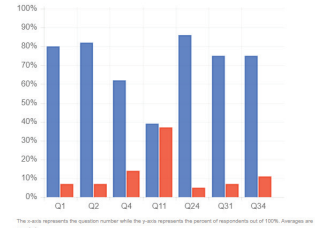
### Percent Responses

Benchmark +     Benchmark -  
 Positive     Neutral     Negative

Download as CSV file

#### Job Satisfaction & Support

Q1. My job makes good use of my skills and abilities.  
 Q2. I am given the responsibility and freedom to do my job.  
 Q4. I am provided the resources I need to be effective in my job.  
 Q11. I am paid fairly for my work.  
 Q24. The work I do is meaningful to me.  
 Q31. The facilities (e.g., classrooms, offices, laboratories) adequately meet my needs.  
 Q34. This institution's benefits meet my needs.



#### Selection Average

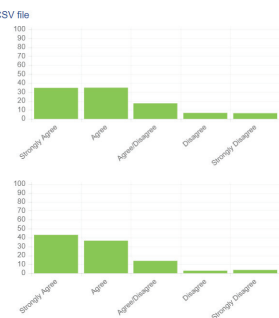
Mean Score    N Value +    N Value +/-    N Value -

**3.85**    **156**    **39**    **29**

#### 1. My job makes good use of my skills and abilities.

Mean Score    Positive +    Neutral +/-    Negative -

**4.12**    **194**    **34**    **16**



# REPORT OPTIONS

Option	Price
<b>Online Reporting</b>	
<i>(Call for Demo Access)</i>	
Report Gateway:	<b>\$4,500</b>
Gateway Renewal:	<b>\$2,900</b>
<b>Suites</b>	
<i>(Reports discounted within suite)</i>	
New Participant Suite:	<b>\$1,650</b>
Survey Data Suite:	<b>\$1,745</b>
Job Category Report Suite:	<b>\$3,200</b>
Survey Results Suite:	<b>\$3,510</b>
Benchmark Data Suite:	<b>\$3,900</b>
Custom Report Suite:	<b>Call For Pricing</b>
<b>Individual Reports</b>	
<i>(See website for samples of all individual reports)</i>	
Aspirational Peer Benchmark Report:	<b>\$975</b>
Benefits Satisfaction Benchmark Report:	<b>\$1,540</b>
Employee Comments Report:	<b>\$615</b>
Job Category Benchmark Spreadsheet:	<b>\$1,025</b>
Minority Aggregate Report:	<b>\$1,025</b>
Race/Ethnicity ScoreCard:	<b>\$795</b>
Overall Benchmark ScoreCard:	<b>\$1,025</b>
Recognition Category ScoreCard:	<b>\$800</b>
Response Distribution Report:	<b>\$1,130</b>
Response Distribution Benchmark Report:	<b>\$1,540</b>
Year-to-Year ScoreCard:	<b>\$615</b>

*\*Payment must be received before delivery.*

**Save 5% on all reports and services when you order by September 6, 2024.**

## ORDER INFORMATION

View sample reports and order online at **GreatCollegesProgram.com** or contact ModernThink at 888.684.4658 or [greatcolleges@modernthink.com](mailto:greatcolleges@modernthink.com).

The *ModernThink Higher Education Insight Survey*® includes 60 survey statements (5 specific to the faculty experience) that measure 10 core dimensions of workplace culture, a benefit satisfaction component, two open-ended questions, and a series of demographic questions. All reports are based on pre-loaded job category demographics. Survey available upon request.